



Pico | Table Lamp

SKU: GIMOER-201-Pico Table Lamp

SPEC SHEET

AS PICTURED

Body in Carrara marble; lampshade Ø 40 x 20 cm in Chestnut Wild Silk; metal details in Brushed Brass.

MATERIALS & FINISHES

Marble: Carrara, Negro Marquina, Estremoz, Estremoz Rose and Guatemala Green.

Lampshade: Wild silk in Black Amber, Chestnut, Coral, Green Moss, Honey, Ivory, Antracite or Silver.

Metal : Brass, Nickel or Copper plate in Polished, Brushed or Antique finishing.

Bulbs & Voltage

1 x MAX 45W, E27 HSGS | 230V

EU & UK – Bulbs, sockets and plugs included.

USA - Wiring, bulbs, sockets and plugs not included;

Non-EU requirements - Please send an email to info@gingerandjagger.com

VOLUME

0,1 m3 / 3,5 ft3 (packed)

DIMENSIONS

W: 40 cm | 15,7"

D: 40 cm | 15,7"

H: 58 cm | 22,8"

CUSTOM

Lampshade suitable for custom size.

Range between:

Ø: 20cm | 7,9" - 150 cm | 59,1"

Base suitable for custom size. Range between:

W 17 cm/6,7" - 34 cm/ 13,4"

D 17 cm/6,7" - 34 cm/ 13,4"

H 38 cm/14,8" - 50cm/ 19,6".

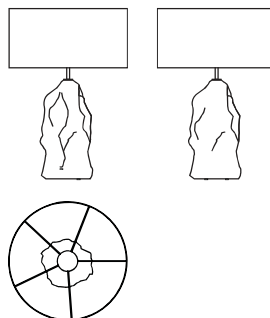
WEIGHT

13 Kg / 28,7 lbs

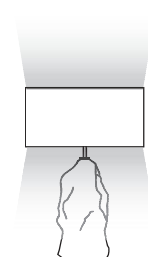
22 Kg / 48,5 lbs

(base packed in wooden case; lampshade packed in reinforced carton case)

TECHNICAL DRAW



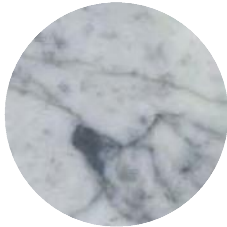
LIGHT DIRECTION



Materials & Finishes

Marble

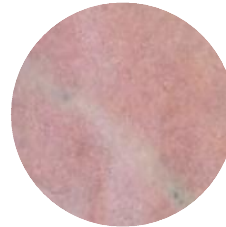
Carrara



Estremoz



Estremoz Rose



Negro Marquina



Guatemala Green



Marble available in polished or honed finishing.

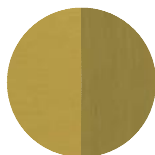
This product is handmade in Porto. Handmade products may have slight variations in size and appearance.

Featured swatches are for reference only.

Materials & Finishes

Metal Plates

BRASS



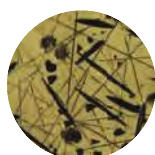
Polished /Brushed



Antique



Chiseled and Hammered



Jagged Hammered



Hammered Polished /Brushed



Hammered Antique

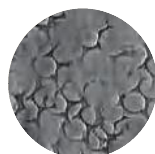
NICKEL



Polished /Brushed



Antique



Chiseled and Hammered



Jagged Hammered

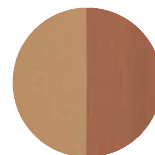


Hammered Polished /Brushed



Hammered Antique

COPPER



Polished /Brushed



Antique



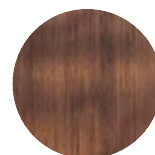
Chiseled and Hammered



Jagged Hammered



Hammered Polished /Brushed



Hammered Antique

This product is handmade in Porto. Handmade products may have slight variations in size and appearance.
Featured swatches are for reference only.

Materials & Finishes

Fabrics

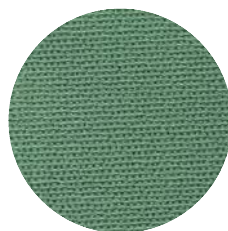
WILD SILK



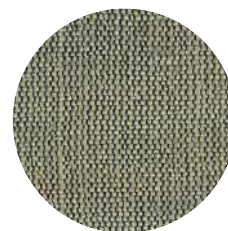
Ivory



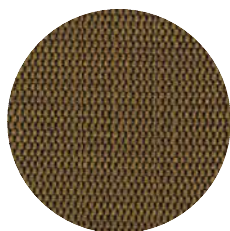
Honey



Green Moss



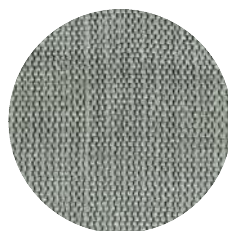
Chestnut



Black Amber



Coral



Silver



Antracite

This product is handmade in Porto. Handmade products may have slight variations in size and appearance.

Featured swatches are for reference only.